

## GENERAL INFORMATION

Lord Selkirk School Division extends a warm welcome to the students who will be attending our schools and riding our school buses. The school division is proud of its excellent safety record, and, with the cooperation and support of our students and their parents, we can ensure that school bus transportation is a safe and enjoyable experience.

Each year, more and more students use our school buses for daily transportation, school field trips and extra-curricular activities. New students, who have never experienced bus transportation, move into our communities. Every student who boards a school bus must be aware of the bus rules and safety procedures. Bus drivers, teachers and parents all play a major role in helping children to appreciate the importance of obeying school bus rules. School bus safety is everyone's responsibility.

The Lord Selkirk School Division operates a large Transportation Department, which transports approximately 3000 students to and from school each day. This is accomplished through the use of 50 vehicles on approximately 120 routes per day.

## ELIGIBILITY

Generally, only those students who reside more than 1.6 km from the designated school are eligible for transportation to and from their residential address.

Pick-up/drop-off locations are within reasonable walking distance from home.

The Division is responsible for the safety of students using school vehicle transportation from the pick-up point to the school, and to the drop-off point on the home route. It is the responsibility of the parents/guardians to

ensure the safety of students to and from the school vehicle pick-up/drop-off points, and to ensure that adequate access/supervision is available to the students at home or such other destination as has been specified by the parent/guardian.

Please note the following operational guidelines:

1. Transported students will be picked up and dropped off at designated stops each day. Alternating pick-up or drop-off points are not permitted.
2. Regularly transported students are permitted to ride on their assigned buses only.
3. A Principal, on occasion, may issue a boarding pass for a student to ride another bus. This would normally be reserved for "one time" occurrences or emergencies.

## CANCELLATIONS

Mornings – Inclement weather or adverse road conditions may force the cancellation of some or all routes during winter months. **PLEASE DO NOT TELEPHONE THE TRANSPORTATION DEPARTMENT.** The following radio stations are alerted by the Division to broadcast public announcements on cancellation of bus routes.

CFQX 104.1 (FM)  
MAGIC 99.9 (FM)  
CBC  
CJOB  
CIFX 1290  
CKY

If bus transportation is cancelled in the morning, this cancellation will be in effect for the remainder of the day.

## SCHEDULING

All scheduling and/or changes to existing transportation are to be done in writing and submitted to the Transportation Office.

## BUS DRIVER

Bus drivers must fulfill the provincial licensing standards for bus operators and also:

- determine the safe condition of the school bus by daily inspections;
- maintain time schedules;
- signal or supervise safe crossing times to departing students;
- remain in the bus when students are in it;
- notify Principal of student misbehaviour.

## PRINCIPAL

Principals have responsibility for:

- students' behavior while on the bus;
- supervision of bus loading and unloading at schools;
- withdrawing bus privileges on referral of discipline problems from drivers;
- acting on reports received concerning discipline problems;
- notifying parents of student's behaviour;
- delivering Student Ridership Programs.

## PARENTS

To emphasize that parents play an important role in the operation of a safe transportation system, they may assist by:

- ensuring students' conduct prior to pick-up and after drop-off;
- co-operating with Principals and drivers in cases of misbehaviour.

## THE MOTORING PUBLIC

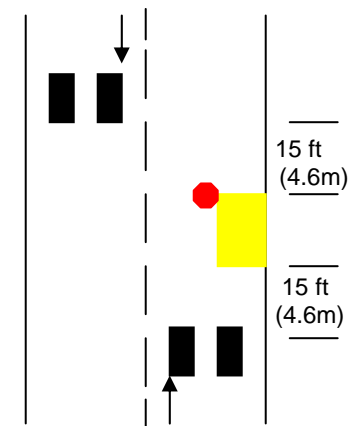
### SCHOOL BUSES

Whenever you approach a school bus from either the front or rear, which has stopped to pick up or discharge passengers and is displaying its red flashing lights or other warning device, you must stop your vehicle not less than fifteen feet (4.6 m) from the bus.

You must remain stopped until the bus has started up again or until the school bus driver ceases to operate the signals (or warning device).

You may meet a school bus traveling with amber lights flashing. When the school bus driver activates these lights, it means that the school bus is about to stop. You need not stop when meeting a school bus from the opposite direction of a divided highway – one that is physically separated from a parallel road by a safety aisle. A double solid line is not a physical separation. You must, however, slow down and be on the alert for children who may run onto the roadway.

You must stop your vehicle not less than 15 feet (4.6 m) from the bus.



**PROTECT OUR CHILDREN**  
**DO NOT PASS a school bus**  
When its red lights are flashing

**LSSD  
Transportation Services**

**EXPECTATIONS OF PASSENGERS**

Students using transportation services in the Lord Selkirk School Division are expected to display respect for the driver and their fellow passengers as well as the equipment used for their transportation. Abuse of the driver, other passengers or the vehicle will not be tolerated. Restitution will have to be made for any willful damage to the bus. Appropriate behavior is required.

- 1) The school bus driver is in charge. Students will follow his/her direction promptly.
- 2) Students shall be at their designated stop five minutes prior to scheduled bus arrival time. (The bus shall wait if ahead of schedule).
- 3) Students shall enter/leave the bus in an orderly manner and only at their designated stop.
- 4) Unnecessary conversation with the driver is discouraged.
- 5) Classroom conduct is to be observed, students shall sit in their assigned seat, facing forward, and shall not stand or move about the bus while the vehicle is in motion. Ordinary conversation is appropriate. Loud or vulgar language will not be tolerated.
- 6) Students may adjust windows with driver consent. At no time are students to place arms, legs, head, etc. thru the windows.
- 7) Personal listening devices are permitted on the bus provided they are used in appropriate manner. Radios are not permitted and NO device is to be played "out loud" at any time.
- 8) Eating or drinking on the bus is not permitted for the student's own safety.
- 9) Littering on the bus or thru the bus windows will not be tolerated.
- 10) Students must not touch roof vents or engage the emergency equipment, including the radio and emergency exits, except in the case of an emergency or directed to do so by the bus driver.
- 11) Students who display inappropriate behavior will be reported to the school principal and action will be taken in accordance with the "Schedule of Disciplinary Actions".

Transportation to and from school by bus is a privilege, which may be temporarily or permanently revoked if the student chooses to act inappropriately.

**SAFETY TIPS FOR PARENTS**

- 1) Have your children put everything they carry in a backpack or school bag. Loose items can be dropped.
- 2) Warn children that if they drop something near the bus, they should never stop or return to pick it up. Move immediately away from the bus. The bus may start to move, unaware of the child's presence.

- 3) Have them wear bright contrasting colors, they will be more easily seen by drivers.
- 4) Remove or secure drawstrings or other articles of clothing that may become snagged when exiting the bus.
- 5) Don't let your child run, push or shove at the bus stop. It's dangerous near traffic.
- 6) Have your child wait at least 6 feet away from the bus at the bus stop until the driver gives the OK to board.
- 7) If you decide to meet your child at the bus stop after school, wait on the side where the child will be dropped off. Children may be so excited at seeing you that they may dash across the street and forget safety rules.
- 8) If children must cross the street, remind them to wait for the driver to signal that it's safe to cross.

***Lord Selkirk School  
Division  
Is committed to  
Educational Care and  
Excellence***

**LORD SELKIRK  
SCHOOL DIVISION**

**TRANSPORTATION  
DEPARTMENT  
205 Mercy Street  
Selkirk, Manitoba  
R1A 2C8**

**Phone: 482-5942**



**PUPIL TRANSPORTATION  
INFORMATION**

