

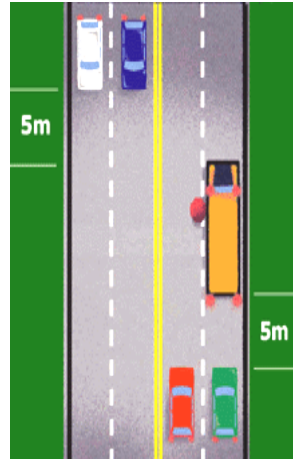
School bus safety

School buses are among the safest vehicles on the road, especially in terms of protecting their precious cargo. Children are at the greatest risk when they're getting on and off the bus.

School buses are equipped with special mirrors installed at the front and STOP arms to help keep children safe. Safety equipment alone cannot guarantee accidents never happen—motorists, parents and kids all play a role in school bus safety.

For motorists:

- Flashing yellow lights on the school bus indicate that the bus is getting ready to stop and load or unload. This means that you need to slow down and get ready to stop.
- Flashing red lights indicate that the bus has stopped and that children are getting on or off. It is illegal to pass a school bus from either direction once it is stopped and has its lights activated unless there is a physical barrier (such as a median) between your vehicle and the bus.
- As soon as the bus driver turns on the flashing red lights, drivers coming from both directions must immediately stop at least five metres from the bus and remain stopped until the lights stop flashing, the STOP arm folds away and the bus begins to move.
- Be extremely cautious around school buses and remember that young children are prone to sudden movements.



We have developed the “Think of Us on the Bus” campaign to help keep our students safe by addressing the problem of traffic passing school buses while their red lights and stop signs are activated.

When we started this campaign, 36 vehicles were passing school buses each day!

We will be installing stop arm cameras on our buses, which will provide video evidence for the RCMP to use when issuing tickets. The penalty for passing a school bus with the red lights and stop sign activated is a fine of over \$670 and two (2) demerits off the driver's licence.

Our goal is not to issue tickets – it is to keep our students safe!



Transportation Department

Phone: 204-482-5942

Email: transportation@lssd.ca

Website: www.lssd.ca

School Bus Ridership



For a list of all Transportation and Division policies please visit our website.

Student Responsibilities

Waiting for the bus:

- Arrive at your bus stop five (5) minutes prior to pick-up time.
- Stand back from the road, well away from the bus.
- If a student is required to cross the road, they must wait for the bus driver to signal it is safe to cross. Students are to cross three metres in front of the bus and are to look both ways to make sure there is no traffic approaching.

Getting on the bus:

- Approach the bus only when it is completely stopped.
- Line up and wait for the door to open. The driver will signal to board the bus.
- Board single file in an orderly manner.
- Use the handrail to prevent falling.

Getting off the bus:

- Remain seated until the bus comes to a complete stop.
- Leave the bus in an orderly fashion.
- The bus driver will signal when it is safe to cross the road.

Behaviour while on the bus:

- Behaviour that may distract the driver or interfere with their driving will not be tolerated.
- Follow the bus driver's instructions.
- Eating or drinking on the bus is not permitted.
- Students are to sit in their assigned seat and remain seated until destination is reached.
- Refrain from fighting, horseplay, and using obscene language.
- Keep the aisle clear by placing all items on your lap or under the seat.
- Windows may only be opened with the driver's permission.
- Never stick any part of your body out of the window.
- Throwing objects inside the bus or out of the window is not permitted.
- Do not tamper with the bus or its equipment.
- Do not damage or vandalize the bus or its equipment in any way.
- Alcohol, drugs, vaping, or any tobacco products and the use of lighters or matches are prohibited on the bus.

Cancellations

Inclement weather or adverse road conditions may force the cancellation of some or all routes. Please do not telephone the Transportation Department. Announcements will be made on radio stations, posted on the Division website, and an automated phone message will be sent by the division.

Parent/Guardian Responsibilities

Parents/guardians should help to maintain a high standard of safety and acceptable behaviour for students while travelling on school buses. School bus transportation is a privilege and not a right. Bus riding privileges may be suspended for misconduct by students.

Parents/guardians:

- Shall advise and explain to their children the rules and appropriate behaviour on the bus.
- Shall have their children at their bus stop five (5) minutes prior to the arrival of the bus. Drivers are not required to wait past the scheduled pick-up time.
- Are responsible for their children's safety and conduct prior to boarding and after drop off at their designated stop, this includes to and from the bus stop.
- Are expected to co-operate with the principal or school designate, bus driver, and division staff.
- Shall submit a new Request for Transportation Services form if their address or circumstances change.
- Are responsible for any willful damage done by their children. Students found responsible for damage may not ride the school bus until the matter is resolved to the satisfaction of the division.
- Must be aware that students are not permitted to ride the school bus without authorization.
- Must realize that objects that may interfere with the safe operation of the vehicle or safety of the students will not be permitted on the school bus.

Carry-on Items

Carry-on items are restricted to those that can be adequately managed by each passenger in their assigned seat.

Guidelines

- Articles being transported must be secured in a backpack.
- Band instruments in carrying cases allowed on the bus are trombones, trumpets, flutes, clarinets, alto sax and smaller instruments, if space permits in the student's assigned seat.
- Electronic devices are permitted on the bus provided they are used in an appropriate manner (use of earbuds or headphones).

A list of items not allowed on the school bus include:

- tubas
- hockey bags
- baritones (euphonium)
- hockey sticks
- bells
- skis and poles
- tenor sax
- snowshoes
- guitars
- suitcases
- camping equipment
- duffle bags
- skateboards
- snowboards

Contact the Transportation Supervisor for articles not listed.